

Belles montagnes et mer



A sightseeing train running on JR Johana and JR Himi Lines. Enjoy the beautiful scenery of each season from the train windows. The train will temporarily stop at the Amaharashi Coast for visitors to take a picture.

For more details, please visit our website.

Train service primarily on Saturdays and Sundays.
(Except for the New Year Period)

Sat:JR Johana Line Takaoka,shin-Takaoka Sta.↔ Johana Sta.
Sun:JR Himi Line Tonami,Shin-Takaoka,Takaoka Sta.↔ Himi Sta.



Fushiki MAP



Accommodation (Fushiki MAP)

Japanese-Style Hotels

31 Kakogawa Ryokan
TEL.0766-44-1660

32 Koshinoniwa
TEL.0766-44-7739

Spend Time in the Great Outdoors!

12 Amaharashi Coast Quasi-National Park

Regional Map C-1

<National Site of Scenic Beauty>
<Top 100 Shorelines of Japan>

Enjoy the view of the impressive 3,000 meter high Tateyama mountain range from the coast along the Sea of Japan.

● 5 min. walk from Amaharashi Sta.
○ 15 min. from the Takaoka Kita IC on Noetsu Expressway

13 Mt.Futagami Quasi-National Park

Regional Map C-1,2

<Top 100 Night Views>
<Historic Site Designated by the City>

Measuring at 274m above sea level, this double peaked mountain has been regarded as sacred since ancient times. The Tateyama mountain range and the Noto Peninsula can be seen from atop of Mt. Futagami.

○ 20 min. from Takaoka Sta. 15 min. from the Takaoka Kita IC on Noetsu Expressway

Otomo-no-Yakamochi and Takaoka



Otomo-no-Yakamochi, poet of the Manyoshu poetry collection, was assigned to Echu (modern day Toyama Prefecture), as a leader of the provincial government in 746 AD. He was so moved by the area's stunning natural beauty that it led him to write an entire collection of famous poems about it. Today, visitors to Takaoka can come and see the incredible beauty which inspired the well-known poetry collection.

令和×万葉 TAKAOKA

Festivals & Events



May 1

Takaoka Mikurumayama Festival
(National Important Tangible and Intangible Folk Cultural Property)
(UNESCO Intangible Cultural Heritage)

Seven stunning Momoyama-style floats, which beautifully show off the magnificent artisanal techniques behind Takaoka's metalwork and lacquerware industry, are paraded across town during this May-time festival.



June 19 and 20

Goin Festival

A festival where the locals dance the streets around town accompanied to the tune of the Yagaefu metal caster's working song. This is to show appreciation and gratitude to Toshinaga Maeda, the founder of Takaoka.



July 4-7

Toide Tanabata Festival

Tanabata decorations of all shapes and sizes are arranged in colorful archways, beautifully illuminating the streets of Toide.



Late September

Fukuoka-Machi Tsukurimon Festival

Fruits and vegetables are used to create sculptures of well-known characters and sceneries in thanks for a rich and bountiful harvest.



Late September

Nakada Scarecrow Festival

This popular event features a unique variety of scarecrows, made from an assortment of materials!



Mid January

Takaoka Nabe Festival

Locals get together to make gigantic nabe hotpots bursting with locally sourced seafood, vegetables, and other delicious ingredients, all cooked in huge pots measuring over two meters in diameter!



3rd Saturday of May

Fushiki Hikiyama Festival (Fighting Floats)
(Municipal Intangible Folk Cultural Property)

By day, floats are delicately adorned with flowers and paraded through town. By night, the flowers are replaced with hundreds of paper lanterns and the floats are crashed into one another during the festival's heart-racing conclusion.



August 1-7

Takaoka Tanabata Festival

The center of the city is decorated with colorful Tanabata decorations, filling Takaoka's night sky with the feel of summer.



Every First Fri., Sat., Sun. in October

Takaoka Manyo Festival - The Twenty Volume Manyoshu Poetry Recital

A three day event where around 2,000 participants recite 4,516 poems from all twenty volumes of the Manyoshu poetry collection.

Access Information



Access to Takaoka

* The information below shows the quickest possible time it takes to make each respective journey. (Information as of January 1,2025)

Train

Tokyo Sta.	Hokuriku Shinkansen	Kagayaki (Some trains only) Hakutaka	2h16min 2h39min	Shin-Takaoka Sta.
Osaka Sta.	Thunderbird Express Train +Tsurugi Hokuriku Shinkansen		2h26min	
	Thunderbird Express Train	Tsuruga Sta.	1h20min 57min	
Nagoya Sta.	Hikari Tokaido Shinkansen+Shirasagi Express Train+Tsurugi Hokuriku Shinkansen		2h26min	Takaoka Sta.
	Hikari Tokaido Shinkansen	Maibara Sta.	25min	
	Shirasagi Express Train	Tsuruga Sta.	30min 1h13min	
Kanazawa Sta.		Hakutaka,Tsurugi Hokuriku Shinkansen	13min	Takaoka Sta.
Kanazawa Sta.		IR Ishikawa Railway , Ainokaze Toyama Railway	38min	
Haneda Airport	ANA	Toyama Kitokito Airport	1h	Takaoka Sta.
	Bus (Shuttle)	Toyama Sta.	23min	
		Ainokaze Toyama Railway	16min	Takaoka Sta.
Nerima IC	Kanetsu Expressway	Fujioaka JCT	78.6km	
		Joshinetsu Expressway	204.7km	
		Joetsu JCT	138.3km	
		Hokuriku Expressway	13.8km	
Suita IC	Meishin Expressway	Maibara JCT	109.5km	Takaoka IC =about 3h40min
		Hokuriku Expressway	203.3km	
		Oyabe-Tonami JCT	13.7km	
Ichinomiya IC	Meishin Expressway	Ichinomiya JCT	4.6km	Takaoka IC =about 3h
		Tokai-Hokuriku Expressway	184.8km	
		Oyabe-Tonami JCT	13.7km	
Nagoya		Tokai-Hokuriku Expressway	3h30min	Takaoka
Takayama		Tokai-Hokuriku Expressway	2h	Takaoka
Wakura		Noetsu Expressway	1h30min	Takaoka

Express Bus

Nagoya	Tokai-Hokuriku Expressway	3h30min	Takaoka
Takayama	Tokai-Hokuriku Expressway	2h	Takaoka
Wakura	Noetsu Expressway	1h30min	Takaoka

English



歴史都市 高岡

The Historic City of Takaoka

Walking Map

Mawarun

Enjoy a walk through a town of history and artisanship.

Wander Around the Historic City



Statue of Toshinaga Maeda



Kanayamachi (Traditional Metal-casting District)



Takaoka Mikurumayama Festival

A Town of Flourishing Folk Culture & Dreams aboard Kitamaebune Ships

— Two Historical Narratives of Takaoka Designated as Japan Heritage —

In 1609, Toshinaga Maeda, the 2nd lord of the Maeda family, built Takaoka Castle as a key location for land and water transport to support the Kaga Clan (present-day Ishikawa Prefecture and Toyama Prefecture). This was how Takaoka began. Five years later, however, Toshinaga's life came to an end, and Takaoka Castle was abandoned.The samurai began to move towards Kanazawa, and the town began to deteriorate until Toshitsune Maeda, Toshinaga's successor, revitalized the town by turning it into a place of commerce and industry. Utilizing Takaoka's advantageous location, the town was heavily involved in circulating money and goods throughout the Kaga domain, becoming known as the "financial accountant of the Kaga." As a result, manufacturing and craftsmanship developed as the merchants and craftsmen of Takaoka came together. Their traditions have been passed down through the generations to the present, including various festivals and cultural properties. Moreover, the rice and other commodities collected in Takaoka continue to be transported from its Fushiki Port to the rest of the country via the Sea of Japan. Fushiki Port provided the town with wealth as it was once a shipping agent for the Kitamaebune, merchant ships that sailed from Osaka and northern Japan in the Edo Period to the early 20th century. The effects of the affluence brought about by the port can still be seen today in the many festivals and folklore. The two narratives of Takaoka, "Flourishing Folk Culture under the Rule of the Maeda Family of Kaga— People, Craftsmanship, and Heart" and "Kitamaebune: Ports and Residences Built on the Dreams of Brave Seafarers," are designated as Japan Heritage.



Takaoka Kojo (Old Castle) Park

KITAMAE-BUNE

Hands-On Craft Workshops

Please reserve a spot in advance if you intend on attending a hands-on craft workshop.

Metal Casting/Lacquerware

Takaoka Regional Industrial Center (ZIBA) Station Area Map B-3

Selling traditional crafts and souvenirs from Toyama Prefecture. Hands-on craftmaking experience available through metal casting and lacquerware workshops.



Metal Casting

Risaburo Foundry Station Area Map A-2

★ Tin casting/Paperweight, wind chime, small dish, chopstick rest (3,500 yen each)・sake cup (4,800 yen) ■ 8-11, Kanaya-Machi ☎ 0766-24-0852 ◆ 10:00-18:00 ☆ Every fourth Sunday

Nousaku Regional Map B-5

★ Metal Casting Workshop/sake sup, small bowl(4,400yen)・Small dish, chopstick rest (2)(3,300 yen)・animal-shaped chopstick rest & flower-shaped chopstick rest (1,100 yen) (550 yen for elementary school students) ■ 8-1, Office Park ☎ 0766-63-0001 ◆ Please check the Nousaku homepage for more information regarding tin casting workshop times ☆ Year-End and New Year holidays>You can also enjoy factory tours, as well as the Nousaku shop and café.

Raden (shell-inlaid) Crafts

Musashigawa Kobo Regional Map C-2

★ Accessory cases, trays, hand mirrors, and more (6,600 yen each item) ■ 1-23, Jishiki-Machi ☎ 0766-26-0792 ◆ 10:00-16:00 ☆ Saturdays, Sundays, and National Holidays

Accessories

Otera Kohachiro Store Station Area Map A-2

★ Tin Accessory Workshop (2,500yen, Bracelets are 3,500 yen) ■ 6-9, Kanaya-Machi ☎ 0766-25-1911 ◆ 10:00-17:00 ☆ Tuesday

INFORMATION

Taxi

Takaoka Kotsu Co. TEL.0766-23-1212
Fukuoka Taxi Co. TEL.0766-64-2031
Toide Taxi Co. TEL.0766-63-2211
Fukuoka Kotsu Co. TEL.0766-64-2035
Shinwa Taxi Co. TEL.0766-27-0500

City Tram“Manyo Line” Manyosen Co. TEL.0766-25-4139

Bus

Kaetsuno Bus Ticketing Center TEL.0766-21-0950
Toyama Chihō Tetsudō Telephone Center TEL.076-432-3456
Takaoka City Bus TEL.0766-20-1139

Rent-a-Car

Eki Rent-a-Car (Shin-Takaoka-ekimae Branch) TEL.0766-24-4200
Toyota Rent-a-Car (Shin-Takaoka-ekimae Branch) TEL.0766-26-1070
Toyota Rent-a-Car (Takaoka Branch) TEL.0766-21-0100
Guts Rent-a-Car Takaoka-ekimae Branch TEL.0766-30-3820
Nissan Rent-a-Car (Shin-Takaoka-Shinkansen-ekimae Branch) TEL.0766-23-5523
Nippon Rent-a-Car (Shin-Takaoka Station North Exit Branch) TEL.050-1712-2552
ORIX Rent-a-Car (Shin-Takaoka-ekimae Branch) TEL.0766-20-0543

Rent-a-Cycle

Any enquiries should be made to the businesses directly on the contact numbers listed below.

● In Takaoka City (Pedal bicycle) ※ Please return the bicycle to the shop you rented it from.
Shin-Takaoka Station Tourism Exchange Center TEL.0766-30-2626
Takaoka Station Tourist Information Center TEL.0766-23-6645
Wing Wing Takaoka TEL.0766-20-1800 ☆ every 4th monday.
In Takaoka Kojo Park: Sannomaru-chaya TEL.0766-20-1563 ☆ Monday (on the next day if Monday falls on a holiday)
Yamacho Valley (Yamachosuji Disaster Prevention Center) TEL.0766-75-9614
Otaya Parking TEL.0766-28-7716

Business hours : 10:00-16:00 Closed during winter season (Dec.-Mar.) 300 yen

● In Takaoka City (Electric-assisted with COGICOGI Takaoka) ※ Bicycles can be returned to any of the rental shops listed below.
Takaoka Station Bicycle Stand Shin-Takaoka Station Underpass Yamachosuji Disaster Prevention Facility
Available 24 hours 1,980 yen for 6 hours COGICOGI Takaoka Instagram▲

● Fushiki Area ※ Please return the bicycle to the shop you rented it from.
Fushiki Station TEL.0766-44-0244
Business Hours : 7:00-18:00
600 yen per 2 hours (Electric-assisted) 200 yen (Pedal bicycle)

● Takaoka City - Himi City ※ Bicycles can be returned to any of the rental shops listed below.
Amaharashi Station Tourist Information Center ■ Amaharashi Station 105 Shibutani, Takaoka City TEL.0766-44-0659
Himi City Tourist Association ■ Himi Station 1-12-18 Iseomachi, Himi City TEL.0766-74-5250
Himi Banya-gai Harbour Market ■ 25-5 Kitao-machi, Himi City TEL.0766-74-3521
Business hours : 9:00-17:00 (last rental at 16:00)
700 yen (electric bicycle) 300 yen (Pedal bicycle)

Enquiries

Tourism Exchange Department

〒933-0029
Otaya Serio 5F, 101 Otaya-Machi, Takaoka City, Toyama Pref. TEL.0766-20-1301 FAX.0766-20-1496

Takaoka City Tourism Association

〒933-0029
Otaya Serio 7F, 101 Otaya-Machi, Takaoka City, Toyama Pref. TEL.0766-20-1547 FAX.0766-20-1497

Shin-Takaoka Station Tourism Exchange Center TEL.0766-30-2626
Takaoka Station Tourist Information Center TEL.0766-23-6645
Amaharashi Station Tourist Information Center TEL.0766-44-0659
Fushiki Tourist Information Center TEL.0766-44-1199
Fukuoka Town Tourism Association TEL.0766-64-1227

Get the latest news about Takaoka and all of its sightseeing spots here!

Takaoka City Tourism Association「Takaoka Tourism Navi」
<http://www.takaoka.or.jp/> Takaoka City Tourism Association「Takaoka Tourism Navi」▶

Please verify the opening hours in advance (subject to change).

2024.12.10000A



Point & Communicate

Communicate with others by pointing at what you want to say

○○にはどうやって行けばいいですか？

How can I get to ○○ ?

レストラン

A restaurant

トイレ

The restroom

銀行 (両替)

Bank (for currency exchange)

タクシーをここに呼んでいただけませんか？

Would you mind calling me a taxi from here, please?

おすすめはありますか？

What do you recommend?

クレジットカード使えますか？

Can I use my credit card ?

いくらですか？

How much is this?

0 1 2 3 4 5 6 7 8 9

Fukuoka MAP



■ address ◆ opening hours ★ admission ☆ closed ☎ telephone ● transportation (other) ○ transportation (car)

Visit History & Culture

2 National Treasure Zuiryuji Temple

■ 35, Seki-Honmachi Station Area Map **B-4**
(National Treasure) (National Important Cultural Property)

Zuiryuji was constructed by the third head of the Kaga Domain, Maeda Toshitsune, as the family temple of the founder of Takaoka, Maeda Toshinaga. Featuring an architectural layout typical of Zen Buddhist temples, the Sanmon Gate, Butsuden Buddha Hall, and Hatto Lecture Hall are all designated as National Treasures of Japan.

◆ 9:00-16:30 (9:00-16:00: Dec. 10-Jan. 31) ★ Adult: 500 yen; High/junior high school student: 200 yen; Elementary school student: 100 yen ☆ Open 7 days/week ☎ 0766-22-0179 ● 10 min. walk from Takaoka Sta. 15 min. walk from Shin-Takaoka Sta. ○ 10 min. from Takaoka IC on Noetsu Expressway



From Takaoka Sta.
On Foot
10min.

From Shin-Takaoka Sta.
On Foot
15min.

Built over the course of twenty years, the tiles of the Butsuden Main Hall are made completely out of lead!



Tomb of Toshinaga Maeda

■ 72-1-1, Seki Station Area Map **C-4**
(National Cultural Property)

The tomb of Toshinaga Maeda was built upon the 33rd anniversary of his death, by the third head of the Kaga Domain, Toshitsune Maeda. It is said to be one of the largest individual tombs of all of the daimyo feudal lords.

● 15 min. walk from Takaoka Sta.
○ 15 min. from the Takaoka IC on Noetsu Expressway



Reception Room
(Raised Audience Room, "Jodan no Ma")

9 National Treasure Shokoji Temple

■ 17-1, Fushiki-furukokufu Fushiki Map **A-3** Regional Map **D-2**
(National Treasure) (National Important Cultural Property)

Head of all True Pure Land Buddhist temples in the Etchū region, Shōkōji thrived as an influential temple while maintaining deep ties with the feudal lords of Kaga Domain, the imperial court, and the Honganji temple in Kyoto. On the vast premises, the Hondō Central Hall and Ōhiroma Reception Hall & Shikidai Entrance have been designated as National Treasures, and the 10 remaining structures as Important Cultural Properties of Japan.

◆ 9:00-16:30 (For Dec 1st - Feb 28th, 9:00 - 16:00) ★ 500 yen repair and restoration support donation; JHS/SHS students: 200 yen; elementary students: 100 yen ☆ Open 7 days/week ☎ 0766-44-0037 ● 5min. walk from Fushiki Sta.

Takaoka Fushiki Kitamaebune Museum

■ 7-49, Fushiki-furukokufu Fushiki Map **B-2**
(Municipal Cultural Property)

The former residence of the Akimoto family – a family of ship-owners living in the Fushiki area – was transformed into a museum where you can learn all about the history of Fushiki's Kitamaebune cargo ships.

◆ 9:00-16:30 ★ Adult: 300 yen, Elementary/junior high school student: Free of charge ☆ Tuesdays (the following day if Tuesday is a holiday), Year-End and New Year holidays ☎ 0766-44-3999 ● 10 min. walk from Fushiki Sta.
○ 15 min. from the Takaoka Kita IC on Noetsu Expressway

Visit the Fujiko F. Fujio Character Attractions!

Takaoka is the birthplace of manga artist Fujiko F. Fujio, a well-known manga artist and creator of the highly popular Doraemon series and others. Places dedicated to Doraemon and his other manga characters are dotted about the city, so you never know just when you might bump into everyone's favorite blue cat and more!

Takaoka Fujiko・F・Fujio Hometown Art Gallery

■ 1-30, Nakagawa-1-chome (Takaoka Art Museum 2F) Station Area Map **D-2**



Follow the footsteps of manga artist Fujiko F. Fujio, and discover the wonder and excitement that lie within his well-loved manga panels at this very special art gallery!
◆ 9:30-17:00 (Last entry at 16:30) ★ Adult: 500 yen, High/Junior High School student: 300 yen, Elementary School/ Kindergarten student: 200 yen, Children aged 3 and under: Free ☆ Mondays, Year-End and New Year holidays ☎ 0766-20-1170

Takaoka Otoginomori Park



■ 1342, Sano Station Area Map **A-6**

Take a walk around Doraemon Field where statues of all your favorite Doraemon characters await! Also take a look at the sundial found within the park too!

★ Free of charge ☎ 0766-28-6500
○ 10 min. from Takaoka Sta.; 10 min. from the Takaoka IC on Noetsu Expressway.

Manga Art Brush Statue

■ 1-6, Kojo (Zoo in Takaoka Kojo Park) Station Area Map **C-2**

Covered in drawings of Kappa, a mythical Japanese creature, this art brush-shaped statue features the work of over 154 manga artists, including the manga artists Fujiko F. Fujio and Osamu Tezuka.

Doraemon Post Box



■ Takaoka Station Ticket Gates. Station Area Map **C-3**
Crafted from Takaoka bronze, this special post box was erected in celebration of the 80th anniversary of the birth of manga artist Fujiko F. Fujio.

Showa Note



From Shin-Takaoka Sta.
On Foot
20min.

■ 850, Sano Station Area Map **A-6**

The production center of the well-loved Japanese notebooks. There is special Doraemon wall art here, which you can see from the neighboring Takaoka Otoginomori Park, those of which you can only find here!

○ 10 min. from the Takaoka IC on Noetsu Expressway.

©Fujiko-Pro

The Skills Live On

4 The Great Buddha of Takaoka

■ 11-29, Ote-Machi Station Area Map **C-3**
(Municipal Cultural Property)

This large Buddha statue was erected over a period of 30 years with the townspeople's generous donations and their exceptional metal-casting skills.

At 15.85m tall and 65 tons, the Great Buddha of Takaoka stands alongside those found in Nara and Kamakura as one of Japan's largest Buddha statues.

★ Voluntary donation ☆ Open 7 days/week
☎ 0766-23-9156 ● 10 min. walk from Takaoka Sta.
○ 10 min. from the Takaoka IC on Noetsu Expressway



From Takaoka Sta.
On Foot
10min.

6 Kanayamachi

[Traditional Metal-casting District] Wi-Fi

■ 1-5, Kanaya-Machi Station Area Map **A-2**
(National Important Preservation District for Group of Traditional Buildings)

Toshinaga Maeda, lord of the Kaga Domain, invited seven metal casters to Takaoka and provided them with homes in Kanayamachi. The area was then transformed into the birthplace of Takaoka's metal-casting industry.

● 20 min. walk from Takaoka Sta.
○ 10 min. from the Takaoka IC on Noetsu Expressway



From Takaoka Sta.
On Foot
20min.

Takaoka Casting Museum



■ 1-5, Kanaya-Machi Station Area Map **A-2**

In addition to the permanent exhibitions on Takaoka's metal casting, the regularly changing special exhibitions are well worth a visit.

◆ 9:00-16:30 ★ Adult: 300 yen, Elementary/junior high school student: Free of charge ☆ Tuesdays (the following day if Tuesday is a holiday), Year-End and New Year holidays ☎ 0766-28-6088 ● 20 min. walk from Takaoka Sta. ○ 10 min. from the Takaoka IC on Noetsu Expressway

11 Takaoka Manyo Historical Museum

■ 11-11, Fushiki-ichinomiya-1-chome Fushiki Map **A-2** Regional Map **C-1**



immersive projectionspace

Specializing in the research and exhibition of Man'yōshū, this museum displays valuable historical records and provides an immersive projection space, where visitors are brought closer to the world of Man'yō poetry.

◆ 9:00-18:00 (Apr. - Oct.), 9:00-17:00 (Nov.-Mar.) (Last entry: 45 minutes before closing)
★ Adult: 300 yen, Elementary/junior high school student: Free of charge ☆ Tuesdays (the following day if Tuesday is a holiday), Year-End and New Year holidays ☎ 0766-44-5511 ● 25 min. walk from Fushiki Sta.
○ 20 min. from the Takaoka Kita IC on Noetsu Expressway

14 Fukuoka Camera Museum

■ 559 Fukuokashin, Fukuoka-Machi Fukuoka Map **B-1** Regional Map **A-4**

This museum perfectly conveys the charms of cameras and photography. A variety of works, including scenery and portraits by renowned photographers, are exhibited here.

◆ 9:00-17:00 (Last entry at 16:30) ★ Admission fee for exhibitions will be determined in each case ☆ Closed on Mondays (on the next day if Monday falls on a holiday) & on New Year Holidays in addition to temporary closure (due to changes of exhibitions, etc.) ☎ 0766-64-0550 ● 5 min. walk from Fukuoka Sta.
○ 5 min. from the Fukuoka IC on Noetsu Expressway



Local Specialties

Delicious Seafood From Toyama Bay



Toyama Bay is known for its abundance of fresh, delicious fish available all year round.

Locally Brewed Sake

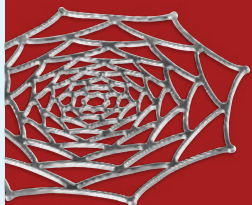


Japanese Sweets

Japanese tea ceremony was a popular pastime among the merchants of Takaoka and even today these sweets are made the traditional way.

Takaoka Copperware・Takaoka Lacquerware (Traditional Crafts)

Even nowadays, Takaoka's traditional craft industry which began at the time of the founding of the city around 400 years ago is still thriving as ever, thanks to the development of new and innovative crafts – perfect for today's modern lifestyle.

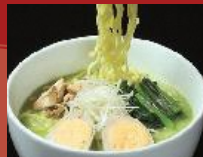


Sedge Hats of Etchu-Fukuoka (Traditional Crafts)

With 400 years of tradition, Takaoka produces 90% of Japan's sedge hats, both for practical use and as folk art items.



▲ Takaoka-style Okonomiyaki Totomaru



▲ Takaoka Green Ramen



Popular Local Favorites

◀ Takaoka Croquettes

Roadside Station Amaharashi

Roadside Station Amaharashi is located in front of Amaharashi Coast, offering a panoramic view of the 3000m high Tateyama mountain range above sea level. In addition to the observation deck and a café with a fine ocean view, many traditional crafts and souvenirs are also available.

■ 24-74, Ota ◆ 9:00-17:00 ※Opening hours may extend seasonally 1F: Information Corner 2&3F: Observation Deck (Open 24 Hours)
☆ Open 7days/week ☎ 0766-53-5661
○ 15 min. from the Takaoka Kita IC on Noetsu Expressway



Roadside Station Manyo no Sato Takaoka

Learn all about the history and culture of Takaoka, shop for crafts that make the perfect souvenir, and taste the delicious flavors of Takaoka.

■ 131-1, Hachi-ga-shima ◆ 9:00-19:00 ※Opening hours may extend seasonally ☆ Open 7days/week ☎ 0766-30-0011 ○ Adjacent to the Takaoka IC on Noetsu Expressway

Takaoka Regional Industrial Center (ZIBA)

Selling traditional crafts and souvenirs from Toyama Prefecture. Hands-on craftmaking experience available through metal casting and lacquerware workshops(reservation needed).

■ Otaya Serio 2F, 101 Otaya-Machi, Takaoka City, Toyama Pref. ◆ 10:00-18:00 ☆ Wednesday, Year-End and New Year holidays. ☎ 0766-25-8283

Meiten Curun (Confectionery/Traditional Crafts)

Find a wide variety of shops offering souvenirs and traditional Takaoka crafts on the second floor of Curun TAKAOKA, found within Takaoka Station.

■ 6-1, Shimozeki ◆ 8:00-20:00 ☎ 0766-22-7728

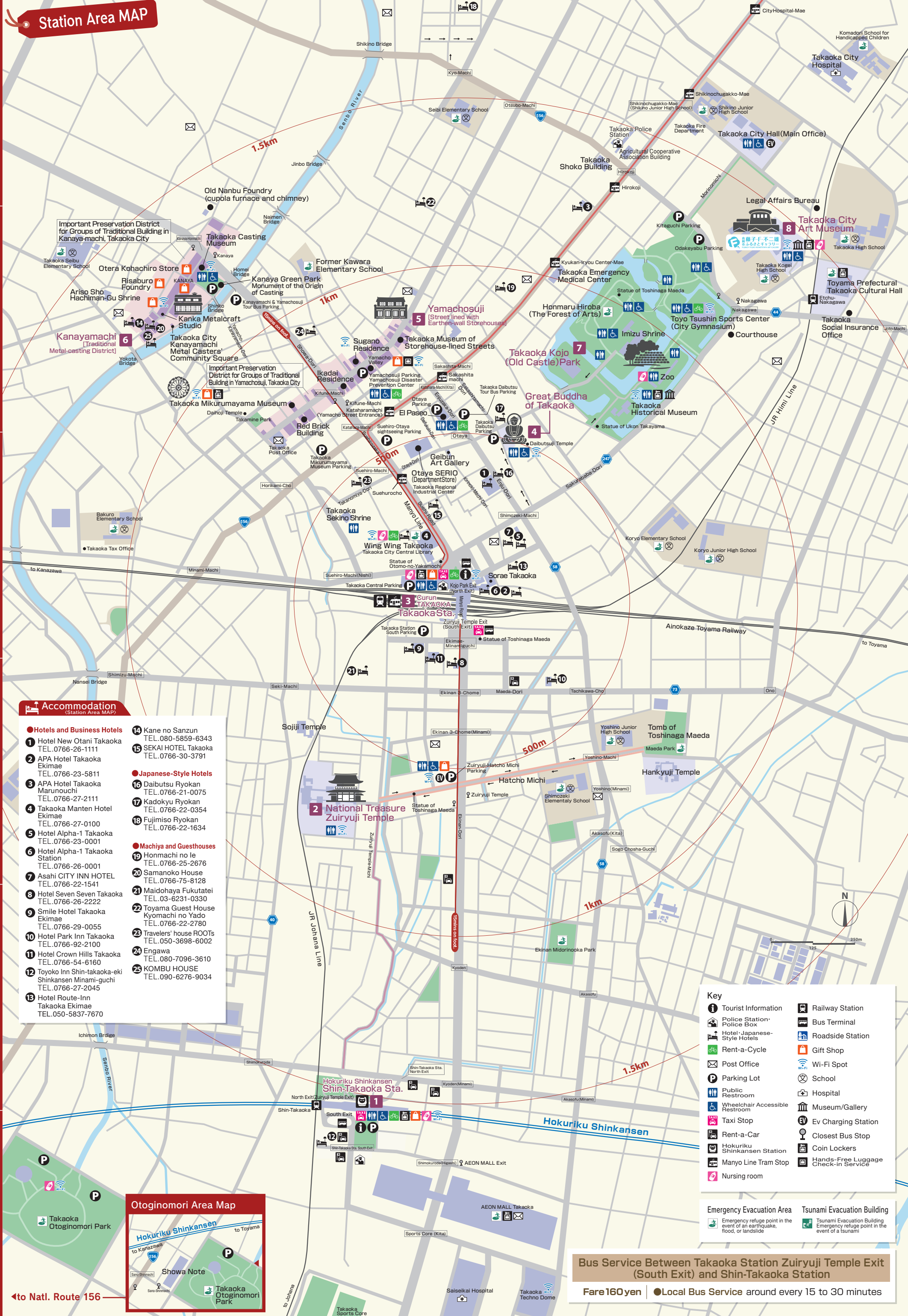
GALLERY MONONO-FU

Inside the Tourism Exchange Center at Shin-Takaoka Station, a gallery exhibiting and selling Takaoka / West Toyama Region's traditional crafts and products.

■ 3012, Shimokuroda ◆ 10:00 - 19:00 (Shop 10:00-19:00) ☆ Open 7days/week ☎ 0766-30-2626



Station Area MAP



Accommodation (Station Area MAP)

● **Hotels and Business Hotels**

- 1 Hotel New Otani Takaoka TEL.0766-26-1111
- 2 APA Hotel Takaoka Ekimae TEL.0766-23-5811
- 3 APA Hotel Takaoka Marunouchi TEL.0766-27-2111
- 4 Takaoka Manten Hotel Ekimae TEL.0766-27-0100
- 5 Hotel Alpha-1 Takaoka TEL.0766-23-0001
- 6 Hotel Alpha-1 Takaoka Station TEL.0766-26-0001
- 7 Asahi CITY INN HOTEL TEL.0766-22-1541
- 8 Hotel Seven Seven Takaoka TEL.0766-26-2222
- 9 Smile Hotel Takaoka Ekimae TEL.0766-29-0055
- 10 Hotel Park Inn Takaoka TEL.0766-92-2100
- 11 Hotel Crown Hills Takaoka TEL.0766-54-6160
- 12 Toyoko Inn Shin-takaoka-eki Shinkansen Minami-guchi TEL.0766-27-2045
- 13 Hotel Route-Inn Takaoka Ekimae TEL.050-5837-7670

● **Japanese-Style Hotels**

- 14 Kane no Sanzun TEL.080-5859-6343
- 15 SEKAI HOTEL Takaoka TEL.0766-30-3791
- 16 Daibutsu Ryokan TEL.0766-21-0075
- 17 Kadokyu Ryokan TEL.0766-22-0354
- 18 Fujimiso Ryokan TEL.0766-22-1634

● **Machiya and Guesthouses**

- 19 Honmachi no ie TEL.0766-25-2676
- 20 Samanoko House TEL.0766-75-8128
- 21 Maidohaya Fukutatei TEL.03-6231-0330
- 22 Toyama Guest House Kyomachi no Yado TEL.0766-22-2780
- 23 Travelers' house ROOTS TEL.050-3698-6002
- 24 Engawa TEL.080-7096-3610
- 25 KOMBU HOUSE TEL.090-6276-9034



Key

Tourist Information	Railway Station
Police Station/Police Box	Bus Terminal
Hotel/Japanese-Style Hotels	Roadside Station
Rent-a-Cycle	Gift Shop
Post Office	Wi-Fi Spot
Parking Lot	School
Public Restroom	Hospital
Wheelchair Accessible Restroom	Museum/Gallery
Taxi Stop	Ev Charging Station
Rent-a-Car	Closest Bus Stop
Hokuriku Shinkansen Station	Coin Lockers
Manyo Line Tram Stop	Hands-Free Luggage Check-in Service
Nursing room	

Emergency Evacuation Area
 Emergency refuge point in the event of an earthquake, flood, or landslide

Tsunami Evacuation Building
 Tsunami Evacuation Building Emergency refuge point in the event of a tsunami

Bus Service Between Takaoka Station Zuiryuji Temple Exit (South Exit) and Shin-Takaoka Station

Fare 160yen ● Local Bus Service around every 15 to 30 minutes